

MC 3000



The MC 3000 has been developed for continuous cutting of continuous trim. The MC 3000 consists of a fixed and a rotating set of blades driven by a direct-coupled motor. The angled rotating blades provide

shockfree cutting and reduce the operating noise level. The shaftless cutting chamber and the fact that the end discs of the rotor serve as part of the cutting chamber prevents any change of wraps.

The rotor is mounted in "seal for life" precision ball bearings. The MC 3000 is installed in a pipe system in connection with either paper and printing press machinery or post-processing machinery.

Kongskilde MC 3000

Technical Data

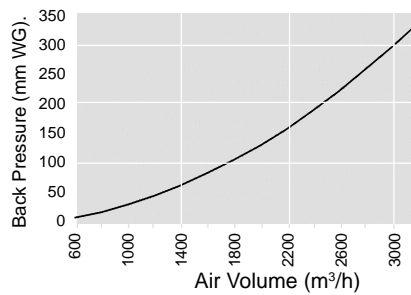
MC 3000	
Rotor	Angled Rotating
	6/2 rotating
	1 fixed

Motor types for the MC 3000	K21R 80 K2 B14 IP55 0.75 kW	K21R 80 G4 B14 IP55 0.75 kW	K21 80 G6 B14 IP55 0.55 kW
R.p.m.	2900	1450	950
Weight in kg, MC 3000 and motor	47	48	49
Nom. cons. at 400 V	1.72 amp	2.10 amp	1.73 amp
Wiring	3 x 400 V, 50 Hz		
Start	Manual/Direct		

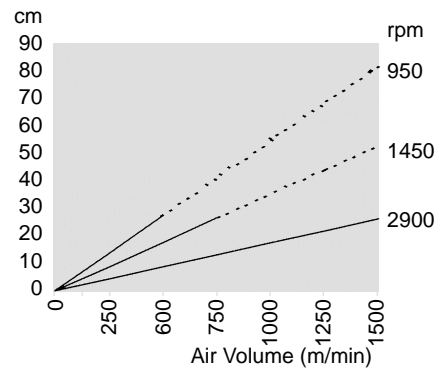
Blades are available in standard hardened steel with good resistance to wear and extended service life. Optional blades in tungsten carbide in various grades are also available.

To obtain variable cutting speed, the cutter can be operated via an electrical frequency control.

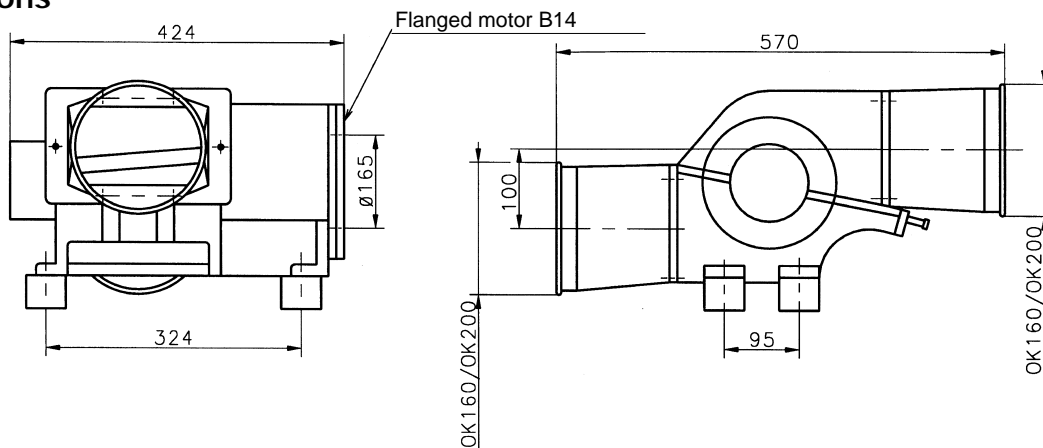
Pressure loss across MC 3000



Cutting Length



Dimensions



Kongskilde Industries A/S
 DK-4180 Sorø, Denmark
 Tel. +45 57 86 50 00
 Fax +45 57 86 51 00
 E-mail: mail@kongskilde.com
 www.kongskilde.com